


<p>СӘТБАЕВ УНИВЕРСИТЕТІ</p> 	<p>NON-PROFIT JOINT STOCK COMPANY «KAZAKH NATIONAL RESEARCH TECHNICAL UNIVERSITY named after K.I. SATPAYEV»</p>	
<p>Level 3 quality management system document</p>	<p>Edition №1 from «_22_»_09_2021 y.</p>	<p>R029-03-02.01.01-2021</p>

**THE REGULATION
ABOUT INTEGRATED (INCLUSIVE) EDUCATION**

R 029-03-02.01.01-2021

Almaty 2021

PREFACE

English translation prepared by the Centre for inclusive education of NJSC
"Kazakh National Research Technical University named after K.I. Satpayev"

CONTENT

1	Scope of application	4
2	Normative references	4
3	Terms, definitions and designations	4
4	Goals and objectives	5
5	Support of students with disabilities in the educational process	5
	Application	7
	Change registration sheet	8

1 Scope of application

The present regulation on the organization of inclusive education at the Kazan National Research Technical University named after K.I.Satpayev (hereinafter referred to as the University) defines the organization of education for people with disabilities at the University.

This regulation is mandatory for use in all structural divisions of the University.

2 Normative references

This Regulation on the organization of inclusive education at the University (hereinafter referred to as the Regulation) has been developed in accordance with:

— The Law of the Republic of Kazakhstan "On Education" dated July 27, 2007 No. 319-III;

— Law RK "On the Rights of the Child in the Republic of Kazakhstan" dated August 8, 2002 No. 345;

— Law RK "On Social and medical-pedagogical correctional support for children with disabilities" dated July 11, 2002 No. 343;

— Law RK "On Social Protection of persons with disabilities in the Republic of Kazakhstan" dated April 13, 2005 No. 39;

— The State Program for the Development of Education and Science of the Republic of Kazakhstan for 2020-2025;

— Documented procedure. DP KazNITU 715 "Academic support for students".

3 Terms, definitions and designations

Barrier-free environment - ensuring accessibility, unhindered access, safety, convenience of the exterior and interior of an educational organization for people with disabilities. Children with disabilities - children under the age of 18 with physical disabilities who have disabilities.

Integrated education is a form of organization of educational activities in which the education of a student with disabilities is carried out at the university during the implementation of general education programs, in a single stream with peers.

Inclusive education is education in a co-educational environment for students with disabilities and students who do not have such restrictions by providing students with disabilities with learning conditions and social adaptation, which do not reduce the overall level of education for students who do not have such restrictions.

An individual curriculum is a plan developed individually for each student in the program.

Limited health opportunities — people with disabilities. Visually impaired - a person with visual acuity from 0.05 to 0.2 units. Hard of hearing - a person with partial hearing impairment.

4 Goals and objectives

1.1 The main purpose of inclusive education is the realization of the right of students with disabilities to receive education in accordance with their cognitive abilities and abilities at their place of residence, their socialization, adaptation and integration into society.

1.2 Main objectives:

— formation of an adequate attitude to the problems of people with disabilities among all participants in educational relations;

— the University maintains specialized records of persons with disabilities and persons with disabilities in the information system at the stages of their admission, training, and employment;

— a mechanism has been developed on the official website of the University for the visually impaired in Polytech online (<https://polytechonline.kz/#>).

Features of the organization of educational activities inclusive education is organized through joint training of students with disabilities and students who do not have such restrictions in a single stream.

5 Support of students with disabilities in the educational process

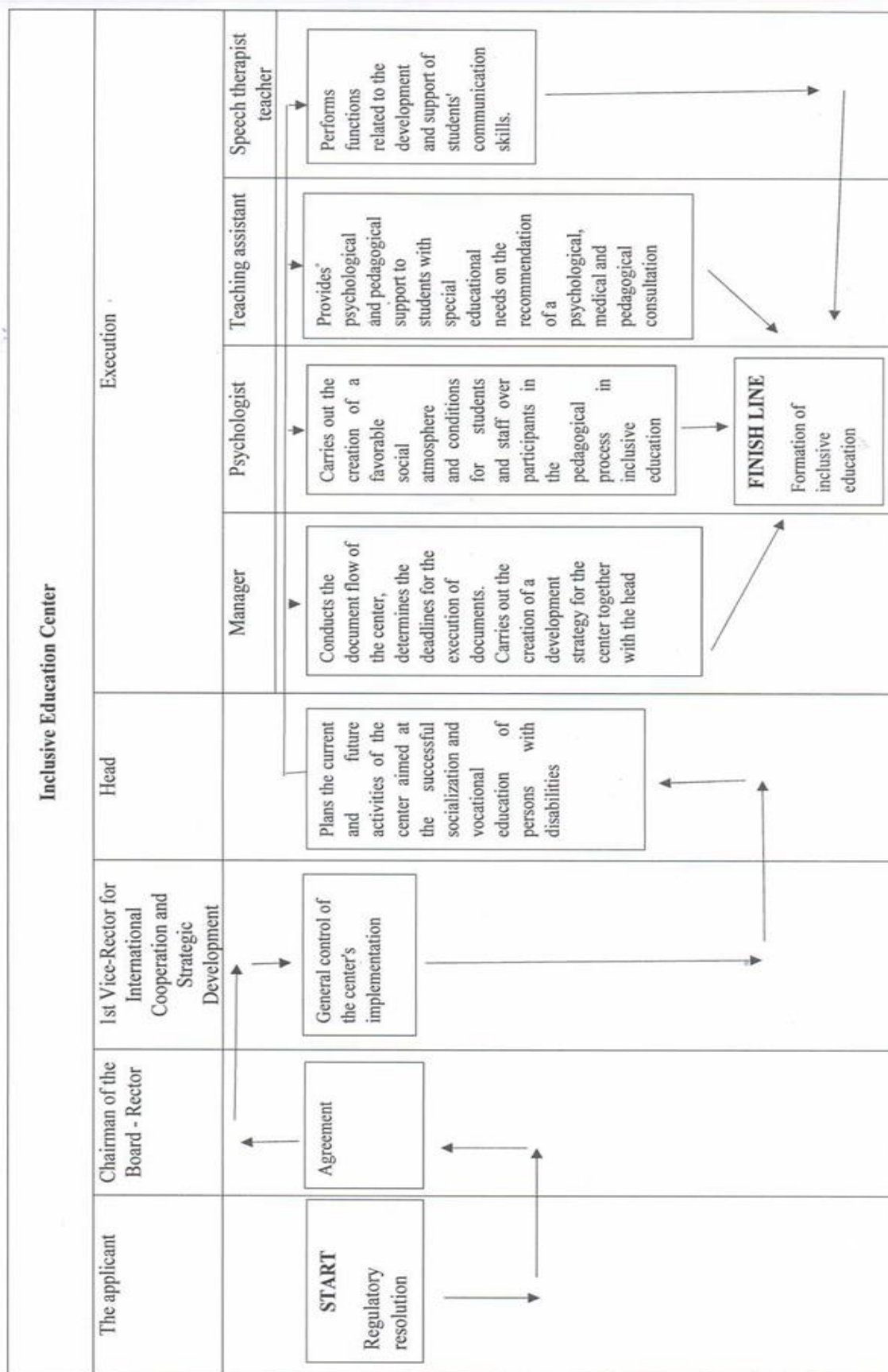
Social support is a set of activities related to the educational process and aimed at social support for students with disabilities and people with disabilities in inclusive education, including assistance in solving everyday problems, living in a hostel, social benefits, scholarship provision.

A professional and socio-cultural environment is being formed at the University, which contributes to the formation of the readiness of all members of the team to communicate and cooperate, the ability to perceive social, personal and cultural differences.

For the implementation of personal, individualized social support for students with disabilities and students with disabilities, the University uses such a form of support as a volunteer movement among students. The volunteer movement not only promotes the socialization of people with disabilities and people with disabilities, but also promotes closer interaction between students and them, develops integration processes in the youth environment, which will certainly manifest itself on a positive side in public life in the future.

The presence of a medical center at the University is necessary for the provision of first aid; medical care for injuries, acute and chronic diseases; the implementation of therapeutic, preventive and rehabilitative measures.

The organization of the educational process of students with disabilities and students with disabilities at the University in order to provide adequate support services corresponding to the educational mission and objectives of the University is considered in the internal regulatory document "Academic support for students".



Change registration sheet _____

Sequence number of changes	Section, paragraph of the document	Type of change (replace, cancel, add)	Number and date of notification	Change made	
				date	Surname and initials, signature, position